



GMT MONTHLY MEMBERSHIP PROGRESS REPORT

Results as of: 6/30/2020

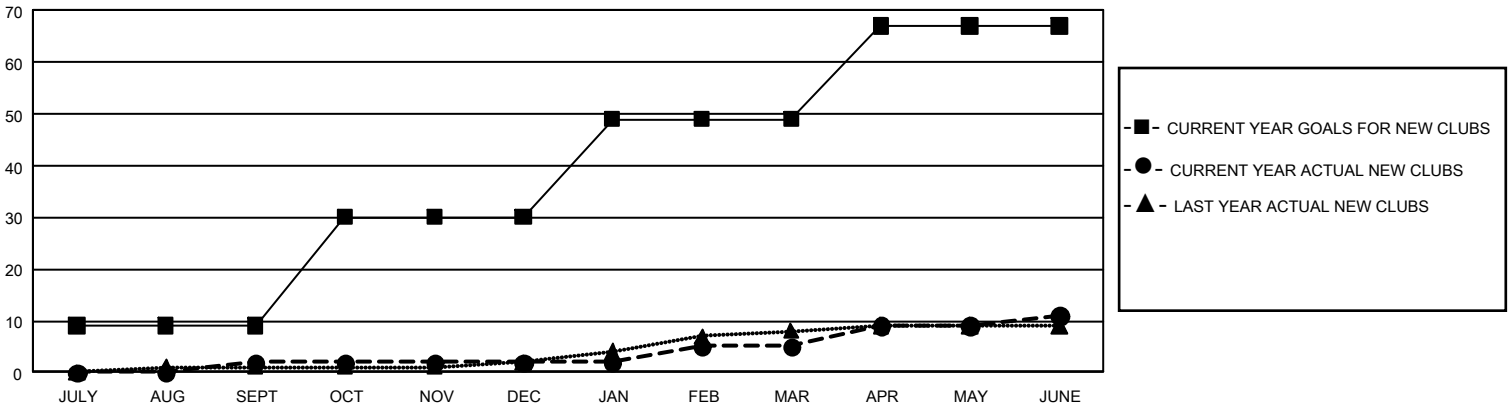
GAT Constitutional Area 5 - Japan

REPORT DOES NOT INCLUDE CLUBS IN UNDISTRICTED AREAS.

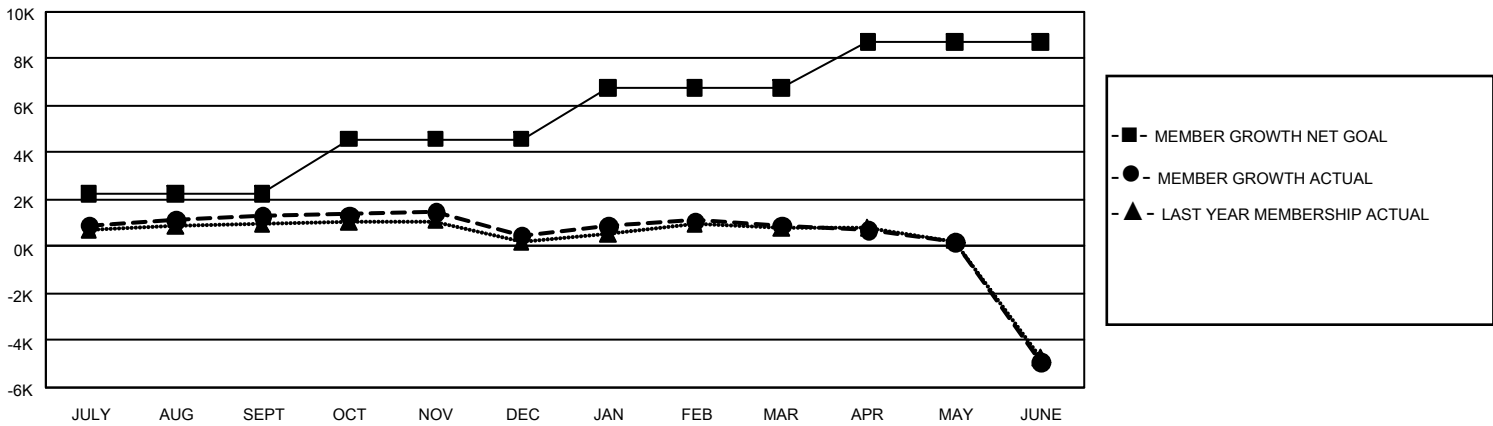
Clubs			
RESULTS FOR 2019-2020			
QUARTER	NEW CLUB GOAL	NEW CLUBS	DROPPED CLUBS
JULY/AUG/SEPT	27	2	6
OCT/NOV/DEC	63	0	5
JAN/FEB/MAR	57	3	7
APR/MAY/JUNE	54	6	47

Members			
RESULTS FOR 2019-2020			
QUARTER	MEMBER GROWTH NET GOAL	MEMBER GROWTH ACTUAL	DROPPED MEMBERS ACTUAL (including transfers)
JULY/AUG/SEPT	6,690	3,323	1,808
OCT/NOV/DEC	7,059	1,569	2,332
JAN/FEB/MAR	6,516	2,010	1,489
APR/MAY/JUNE	5,844	1,285	6,958

GOALS AND ACTUAL NEW CLUBS CUMULATIVE



GOALS AND ACTUAL MEMBERS CUMULATIVE



DROPPED CLUBS: 65	2,119 CLUBS OF 2,974 ADDED 1 OR MORE NEW MEMBERS	GENDER DISTRIBUTION MALE 81,661 (77.05%) FEMALE 24,321 (22.95%)
DROPPED MEMBERS DECEASED 861 CLUB CANCELLED 333 OTHER 11,390 TOTAL 12,584	CLICK HERE FOR CUMULATIVE MEMBERSHIP DATA	TOTAL FAMILY UNIT MEMBERS 38,992 FAMILY MEMBERS PAYING HALF DUES 21,384